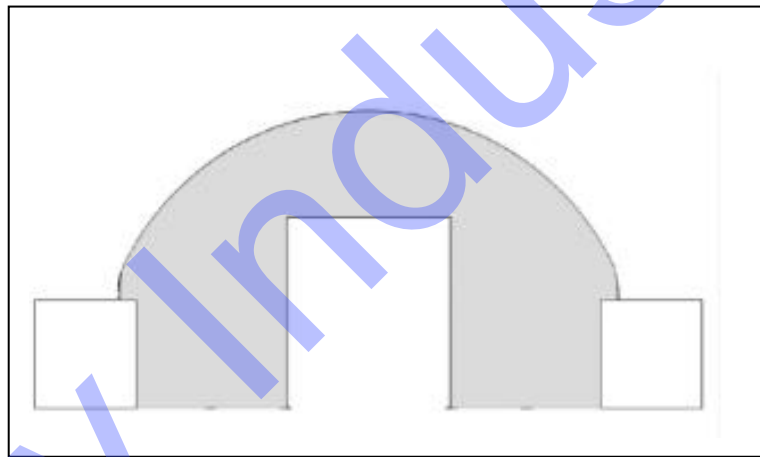


# **Front wall for C2020/C2040**

## **Front wall with winch door**

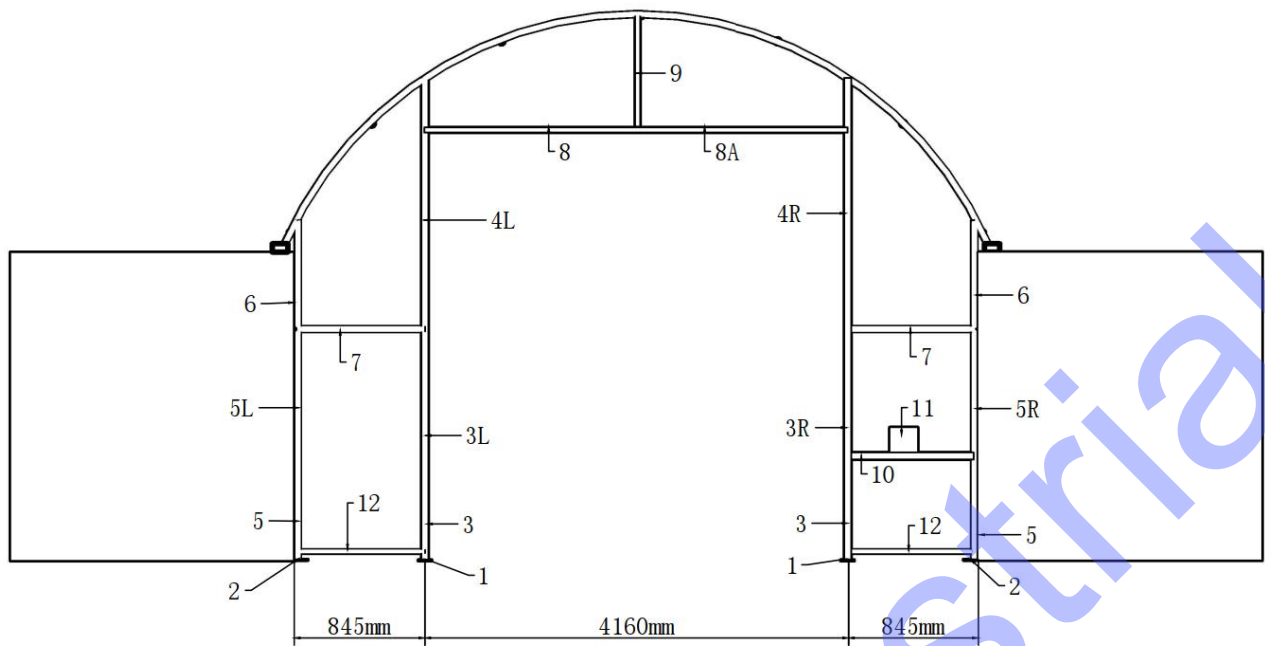
**Assemble on Standard or High Cube Container**



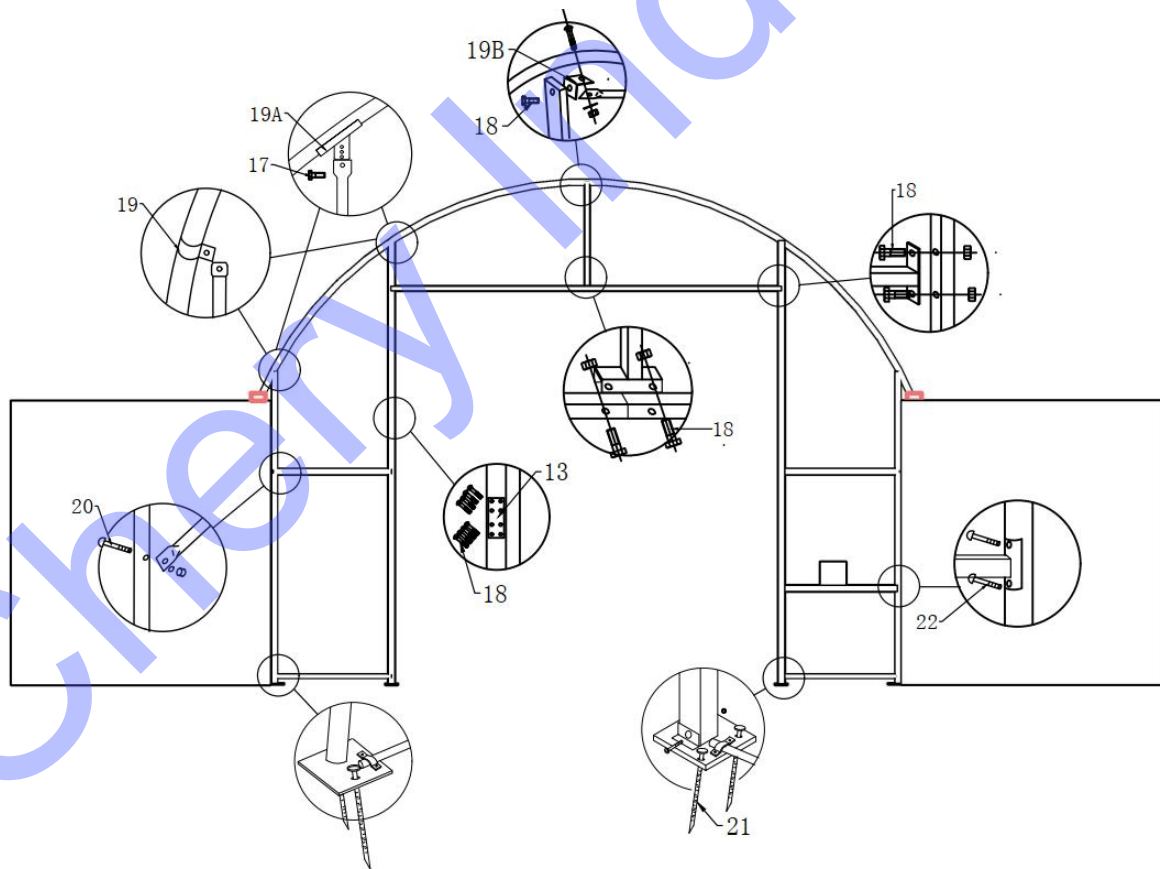
## Parts List

Code	Description	Qty
1	Base plate for mechanical door	2
2	Base for standing leg	2
3	Added lower door track to suit for HQ container	2
3L	Left lower door track	1
3R	Right lower door track	1
4L	Left upper door track	1
4R	Right upper door track	1
5	Added standing leg to suit for HQ container	2
5R	Right side lower standing leg	1
5L	Left side lower standing leg	1
6	Upper standing leg	2
7	Horizontal tube	2
8	Mechanical door beam	1Group
9	Suspender tube	1
10	Square tube for mechanical wheel	1
11	Mechanical wheel+wirerope	1
12	Bottom tension tube	2
13	Door Splint	8
14	Mechanical door pipe	7 groups
15	Front wall cover	1
16	Rope 80m	1 bundle
17	Bolts 10*30	2
18	Bolts 10*90	46
19	Clip	4
19A	Semiarc Iron	4
19B	Angle Iron	1
20	Carriage screw 10*80	4
21	Ground nail	8
22	Carriage screw 8*80	14

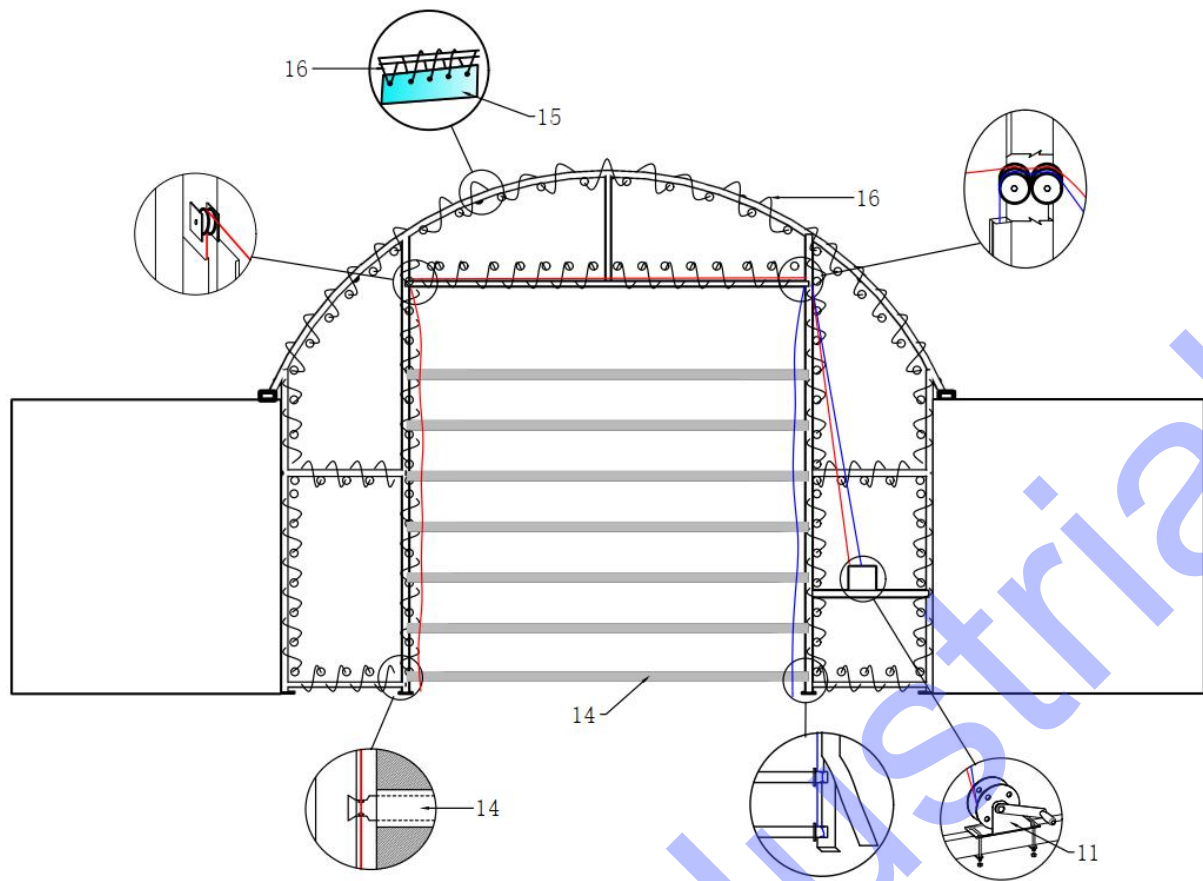
## A---Front wall assembly



1. As Above Figures shows, find out all spare parts for the front wall.



2. Make sure the pacing, and then use screws to connect those spare parts together.



After assembly the front wall, find out the front cover, use ropes to tie the front cover to the front wall. There are some dropping tubes (No. 14) need to be insert into the door cover, use steel wire to insert into all these dropping tubes one by one, and go through the pully from top to bottom & from bottom to top. Tie the end of the steel wire to the winch wheel. Thus when you move the winch wheel, the door could be go up and down.