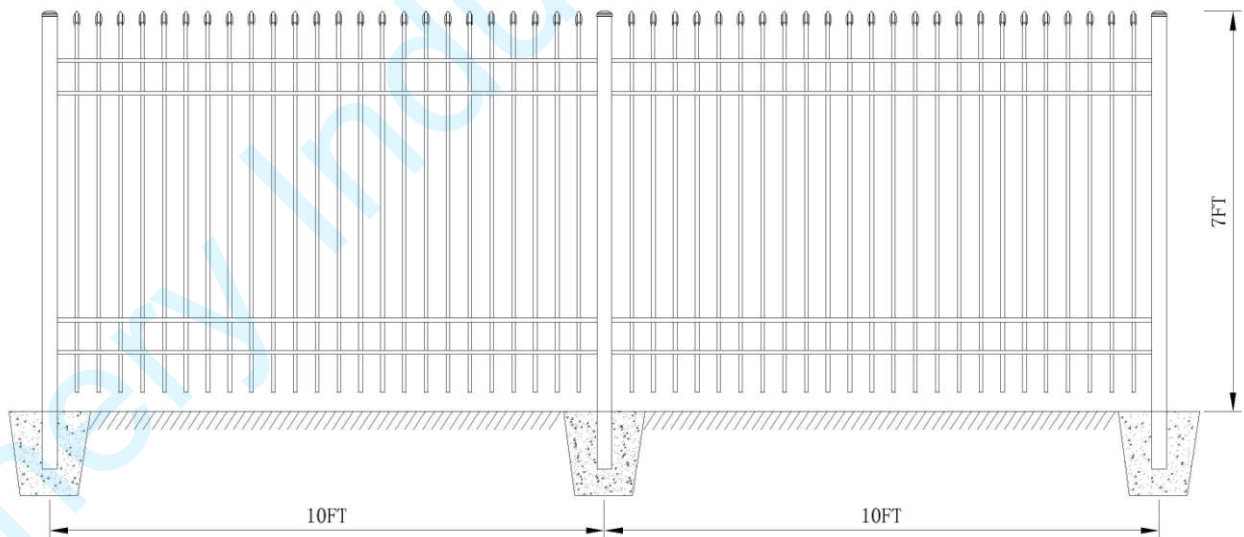


Guidance for Safe Work

Pre-galvanized Powder Coated Steel garden\public Space fence

SIZE:L10FTx H7FT 30PCS Fences+31PCS Posts

Unleaded powder coated



Save this manual for future reference!

THANK YOU!

Our sincere appreciation to you on the purchase of a quality steel drivegate. Product experience is the cornerstone of our company, and our goal is to provide you with a good product that will give you years of satisfaction and operation.

Our record of successful and satisfied customers is evidence of the concern for quality and designed strength that we place into each and every product we build.

As this manual expresses the need for safe operation of your acquisition. It is important that you and the others who in charge of fixing and using this product become familiar with the operation, maintenance and safety instructions found in this manual, Add some common sense to the items mentioned in these manuals as the recipe for safe operation.

Sincerely,
Management & Employees

Features

Pre-galvanized black powder coated steel fence are a easy and affordable way to secure a road way!
It can be used in rural, residential, commercial, military and forestry applications.
Easy to Install.

It can works with our steel drive way farm gate

Available in a bolt to surface model or in ground set model

You may purchase our bolt on channel so that you can attach it to your own fence post or receiver post.

Welded steel tube construction, sand blasted and powder coated

Specifications

Model 1 SIZE:L10FT x H7FT 30PCS Fences+31PCS Posts*124 PCS Brackets

Frame - Top & bottom Horizontal 2pcs

20x 40 x1.0 mm Tube

2nd Rail - Top & Bottom 2pcs

20x 40 x1.0 mm Tube

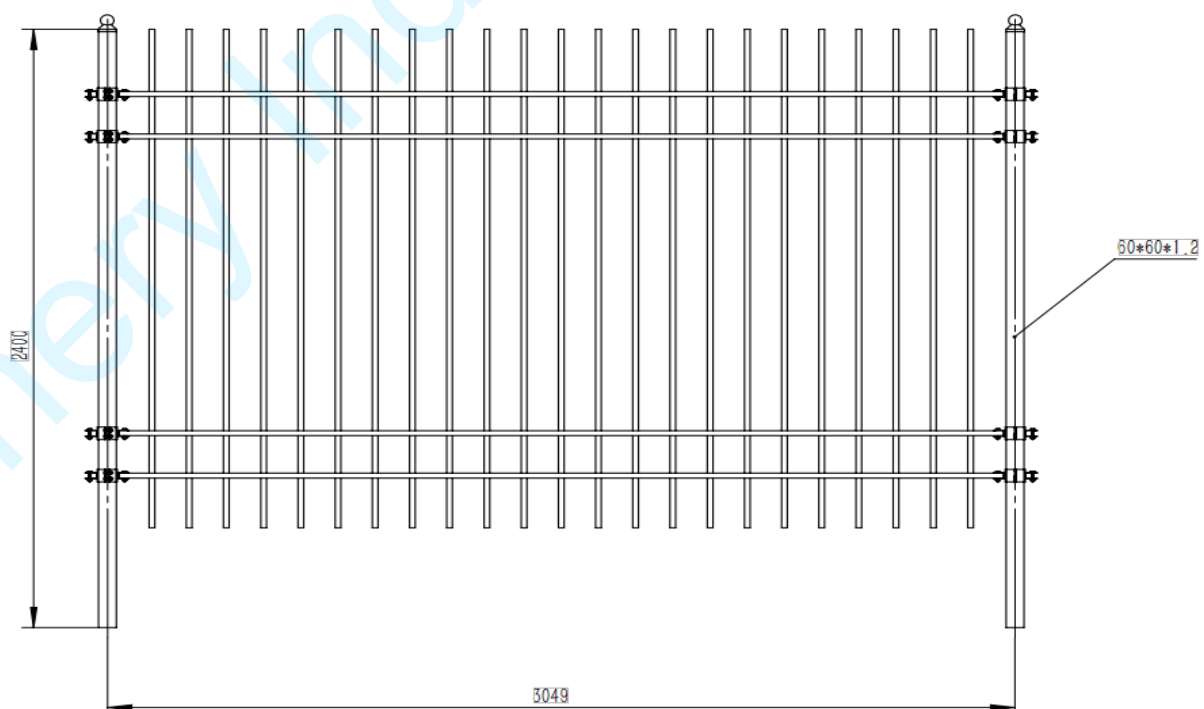
Post

60 x 60 x 1.2mm Tube

Picket 23 in 1 pc fence

19 x 19 x 0.9 mm Tube

Picket Spacing 106 mm



THINK SAFETY, EVERYDAY!

WARNING

For safe operation, read these rules and instructions carefully to avoid accidents that could result in Death or Serious Injury.

TO THE OWNER/OPERATOR

Please read this manual “before” unpacking or using this product for the first time. This manual provides you with the necessary instructions to safely install and use your purchase. Do not let other people use this attachment without first being instructed how to safely use it.

WARNING

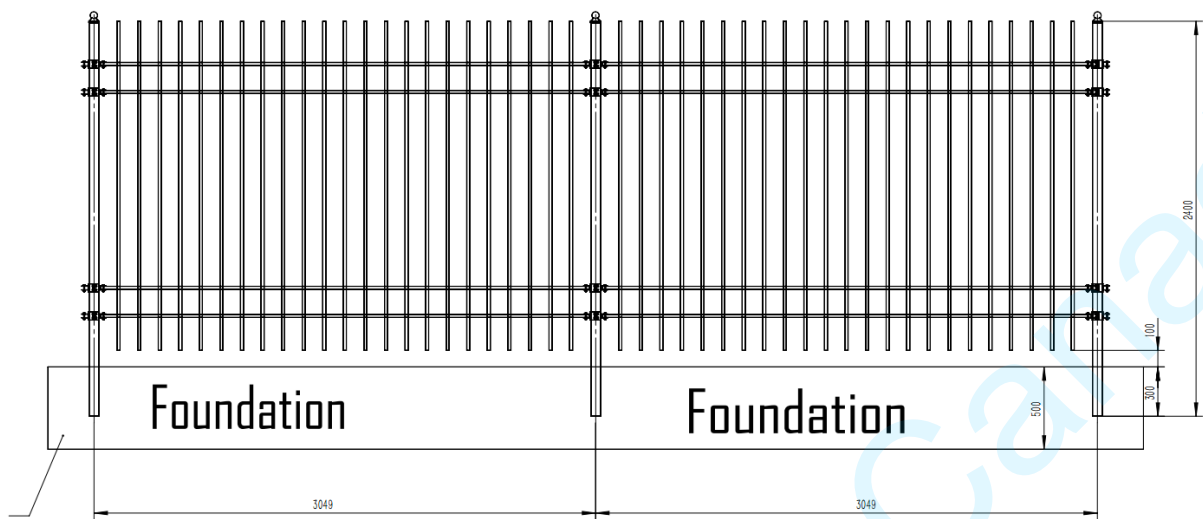
SAFETY TIPS

Always wear proper safety equipment such as safety glasses and gloves
If you need to cut the threaded rods, always use a hacksaw.

WARNING

SAVE THIS MANUAL FOR FUTURE REFERENCE!

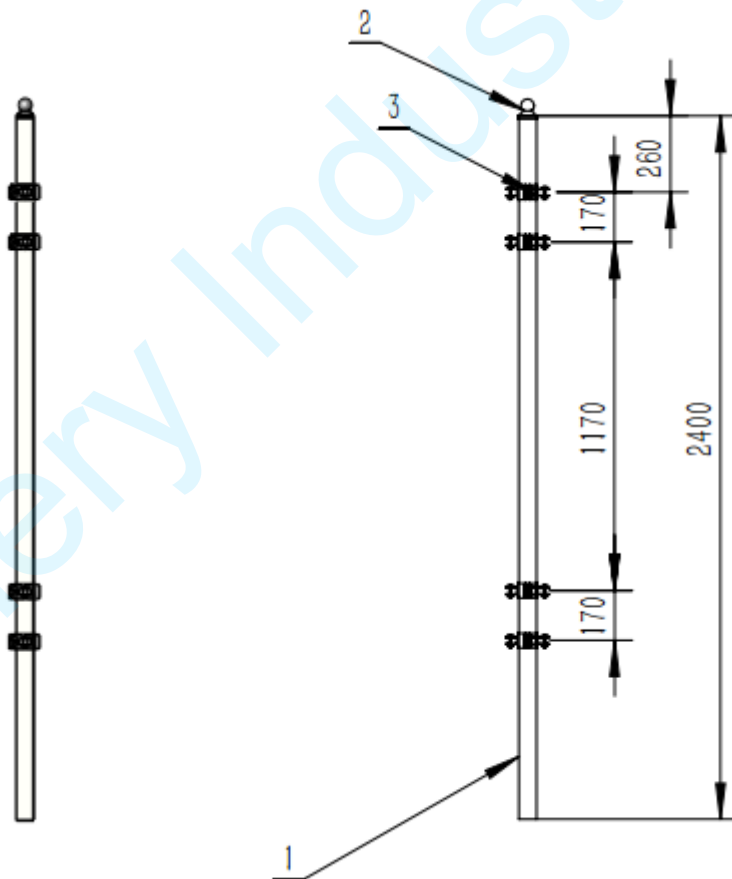
Step 1 Instal the posts as shown



Plug the posts into the foundation 500mm as shown

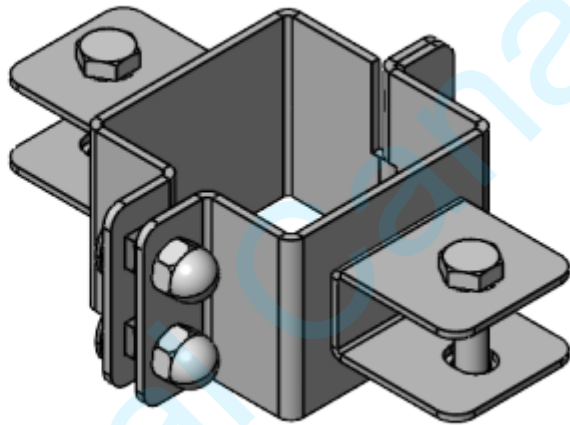
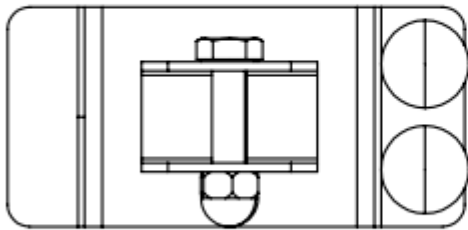
Make sure the post spacing is 3049mm from post center to post center

Step 2 Fix the lock brackets on the post as shown



Step 3 Fix one side of the fence with bolts on the post

Slide the fence to the post with brackets, put four rails into the center of the brackets , Screw nuts to push it through the hole and fix, make sure the bolts hold the fence in place.



Step 4 Fix the other side of the fence on the second post

Repeat that process(Step 3) on the opposite side.

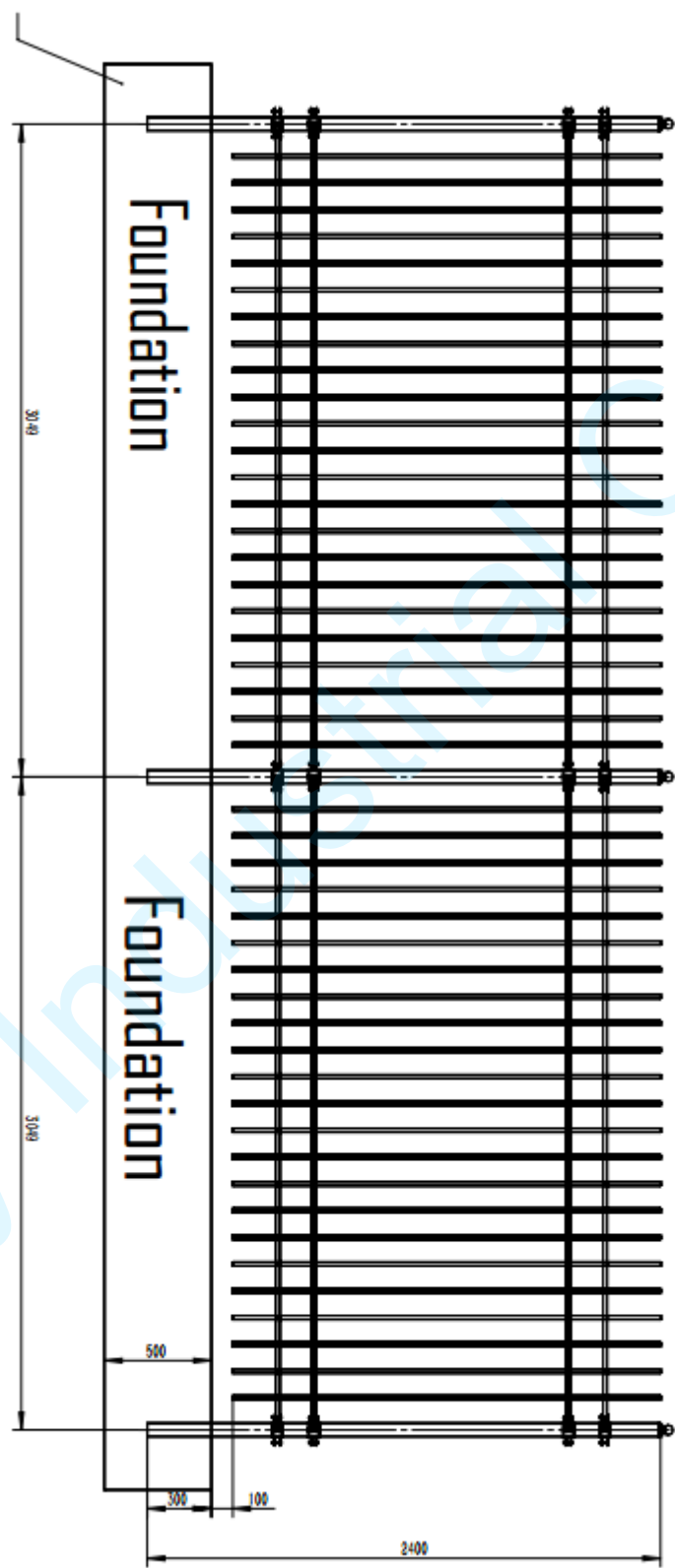
Step 5 Repeat this process for the other fences.

Step 6 Review

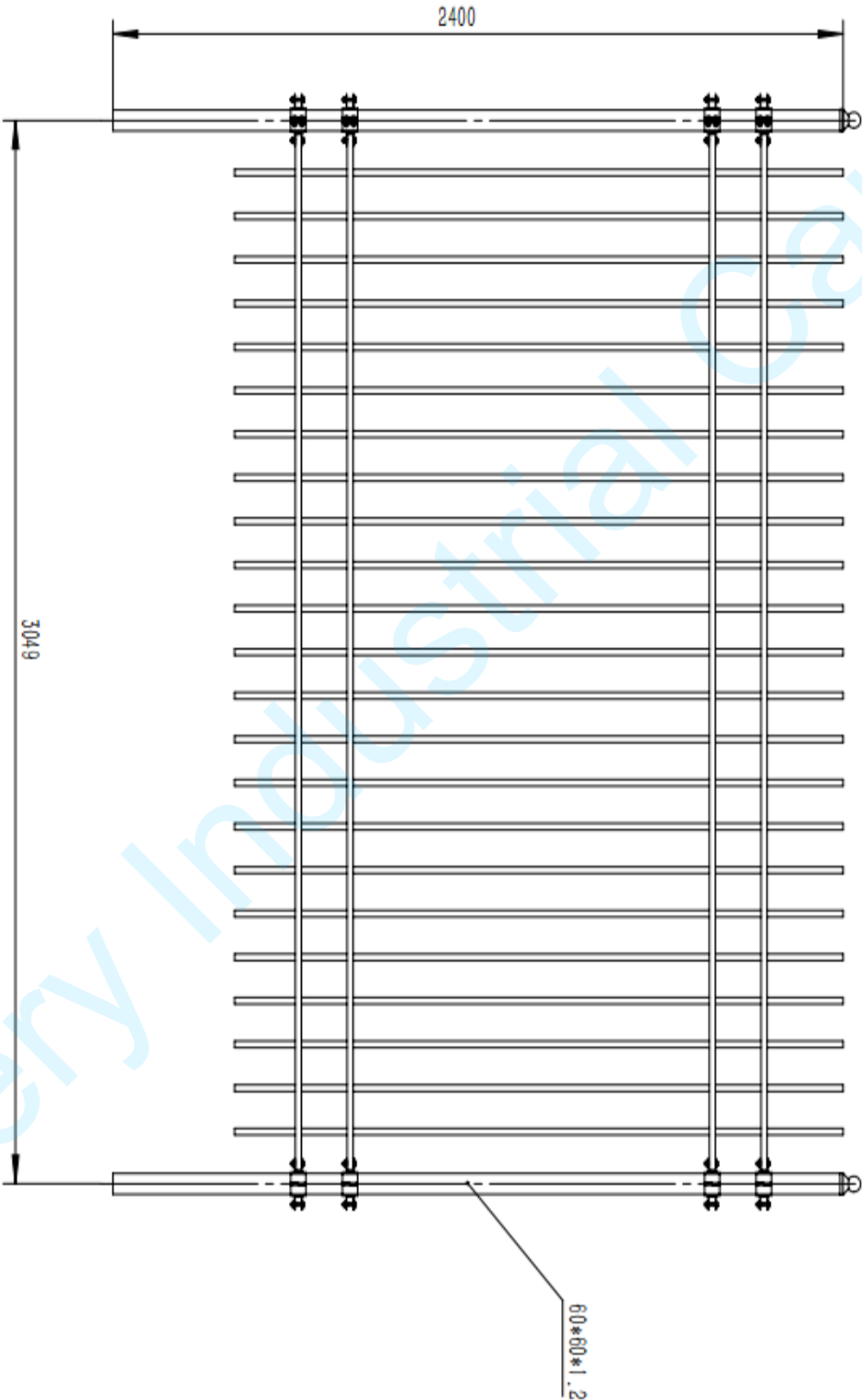
Check everything again to make sure that all the parts are aligned so that they slip into place.

Now all the process is finished!

Appendix 1



Appendix 2



Appendix3-packing details

30 pcs as one lot

