

SHELTER ASSEMBLY MANUAL (W20H12R SERIES)

Model # 203012R / W6.1m x L9.15m x H3.66m

Model # 204212R / W6.1m x L12.81m x H3.66m



SPECIFICATION

W20'x L30' x H12'/W20'x L42' x H12'

Width: 6.1m Length: 9.15m/12.81m Height: 3.66m

Door dimension: W4.5m x H3.2m

IMPORTANT-----READ MANUAL FIRST

Improper site preparation, Assembly and Maintenance may invalidate warranty and cause unnecessary and costly mistake. If you have any questions contact your local dealer.

For User Friendly assembly we have identified each individual component with the part code as indicated in the parts list. Please refer to the part code numbers and drawing to ensure problem free assembly.

It's necessary to tighten the roof fabric enough to avoid "hammocks" on the roof and also re-tighten once or twice again after a few months of use. This is important when assembly in cold weather (autumn and winter) because the fabric is stiff then and when we got the sun and warm weather afterwards it will make the fabric "slack" again and need to be re-tighten before next winter.

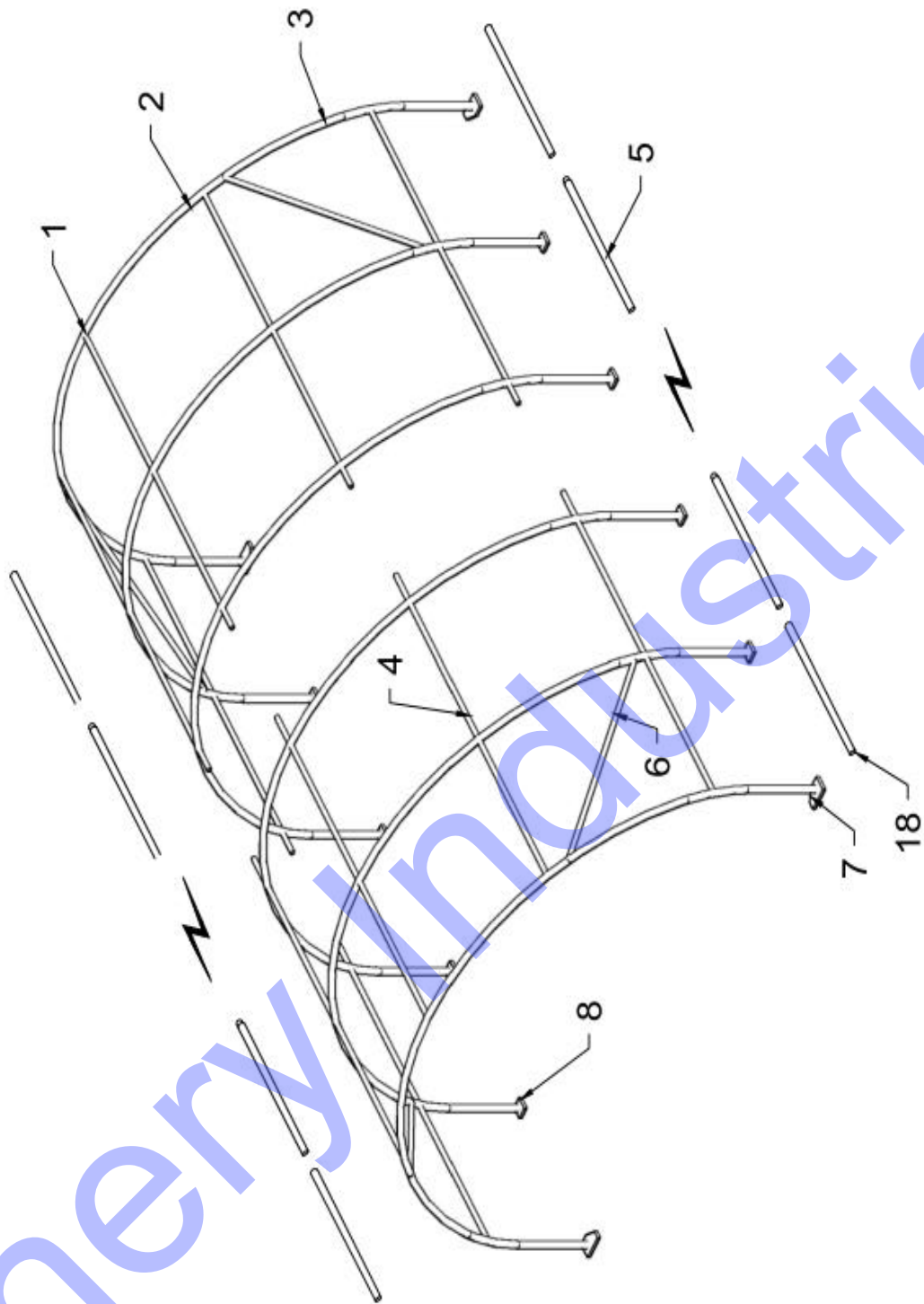
It's the owners responsibility to take of snow immediately if not slide off by itself.

READ ALL INSTRUCTIONS BEFORE ASSEMBLY

1. Keep work area clean. Cluttered areas invite injuries. Do not set up near snow drifts, in slippery places, in high winds, or wet location.
2. Keep children away. All children should be kept away from the work area.
3. Don't over reach. Keep proper footing and balance at all times.
4. Do not assemble in under the influence of alcohol or drugs. Read warning labels on prescriptions to determine if your judgment or reflexes are impaired while taking drugs. If there is any doubt, do not assemble.
5. Be aware of possible windy conditions; fasten the bases in concrete if these conditions are likely to occur. Remove the cover during hurricane.
6. Be careful with power and heat sources. Do not keep heat sources near the tarpaulin. Do not expose to open flame.
7. Be aware of personal safety during assembly and use. Be careful not to pinch fingers with clips and tubes when assembling: when using makes sure there is adequate ventilation for exhaust and other dangerous fumes.

Part List

Part Code	Description	203012R Qty	204212R Qty
1	Roof Bent Tube	6	8
2	Middle Bent Tube	12	16
3	Lower Bent Tube	12	16
4	Roof & Sidewall Purlin	25	35
5	Lower Tension Tube	2 groups	2 groups
6	Diagonal Bracing Tube	4	4
7	Base Plate for corners	4	4
8	Base Plate for Inner sidewall	8	12
8A	Ratchet	12	16
9	Clip for No.6	8	8
10	Stake Peg	36	48
11	Roof Cover	1	1
12	Front & Back Cover	2	2
13	Carriage Bolts M8*60mm	72	96
14	Carriage Bolts M10*100mm	30	40
16	Knitting Rope for Cover	1 bundle	1 bundle
17	Nylon Band for No.8A	12	16
18	Plastic Plug	4	4
19	Tension Ball for end cover	4	4



(W20'x H12') **FRAME SKETCH** Figure 1

● EQUIPEMNT AND TOOLS FOR INSTALIATION

1. Measuring Tape
2. String for Alignment
3. Stakes
4. Step Ladder
5. Sledge Hammer
6. Drill
7. Wrench

INSTALLATION PROCESS

A—BASE INSTALLATION

Please refer to the diagram (Figure 2) to place the base plates.

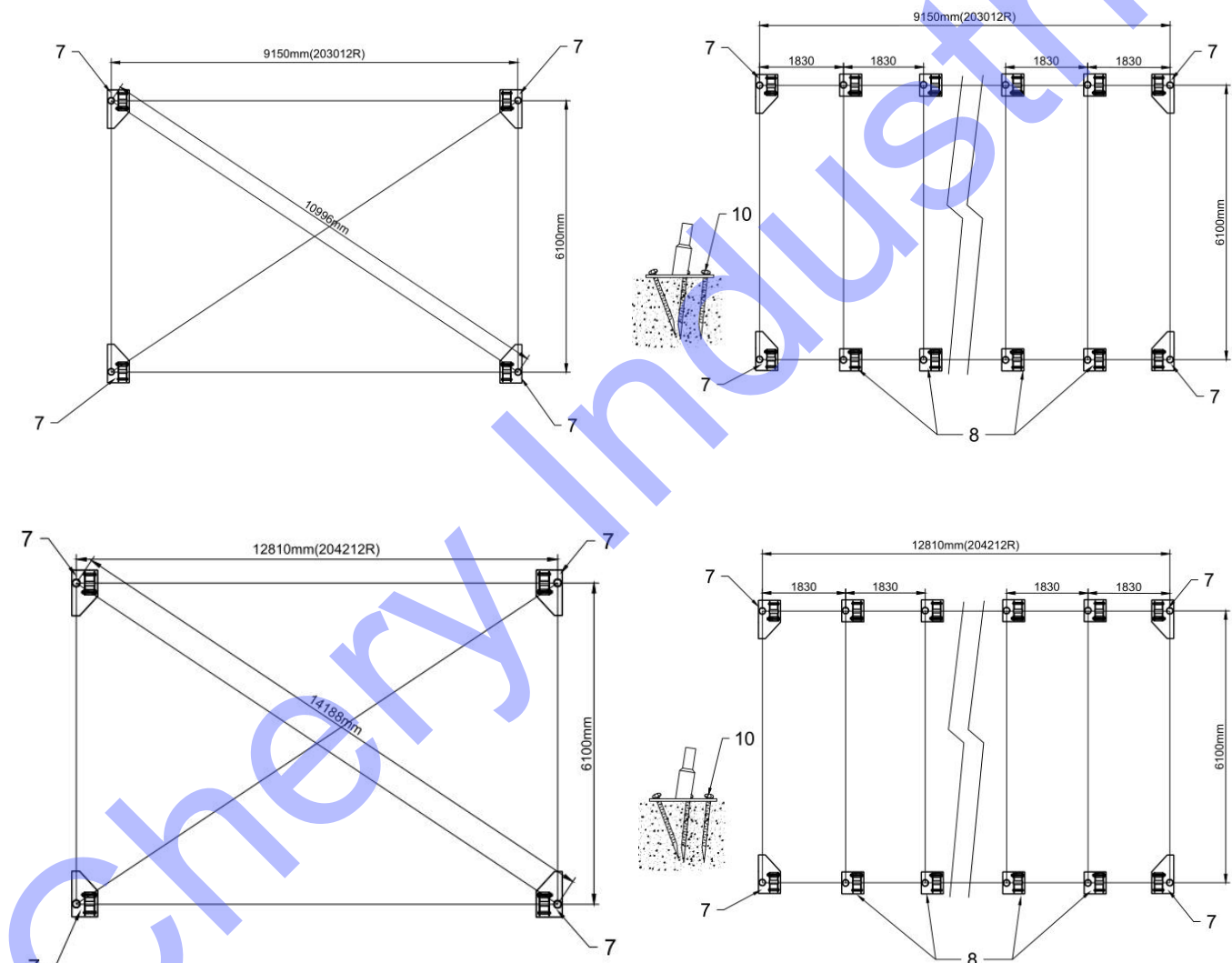


Figure 2

The measure is from center to center of the tubes. Referring to the above diagram and confirm the place of the base plates. ENSURE THAT THE FOUNDATIONS IS SQUARE.

- There are three holes on the Base Plates for corners (No.7) and Base Plate for inner sidewall (No.8), for Stake Peg (No.10). THUS ALL BASE PLATES ARE SECURED.

Foundation Placement

As Figure 2 shown each Base Plate is equipped with 3 pieces of Stake Peg (No.10).

Note: The Stake Pegs apply for normal conditions, not suitable to the rock ground, frozen soil and concrete ground.

B-FRAME INSTALLATION

1. As Figure 3 shown to find one Roof Bent Tube (No.1), two Middle Bent Tubes (No. 2), Lower Bent Tube (No. 3) and assemble every group arch with Bolt M8x60 (No.13). DO NOT install the bolt on the top of the truss where the fabric will rest.

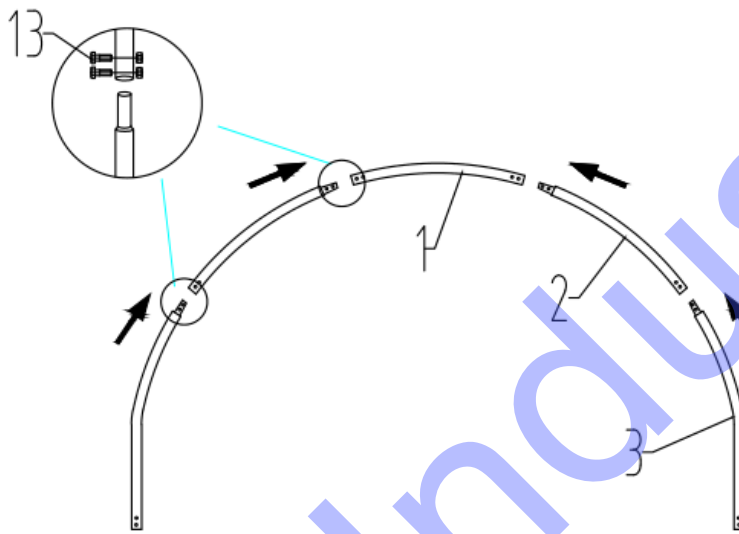


Figure 3

IMPORTANT:THE ARCHES WILL BE WIDER THAN THE BASE PLATES.

- 1.As Step 1 shown to find one Roof Bent Tube (No.1), two Middle Bent Tubes for doors (No.2),Lower Bent Tube(No .3),and assemble every group arch with Bolt M8x60mm (No.13). DO NOT install the bolt on the top of the truss where the fabric will rest.

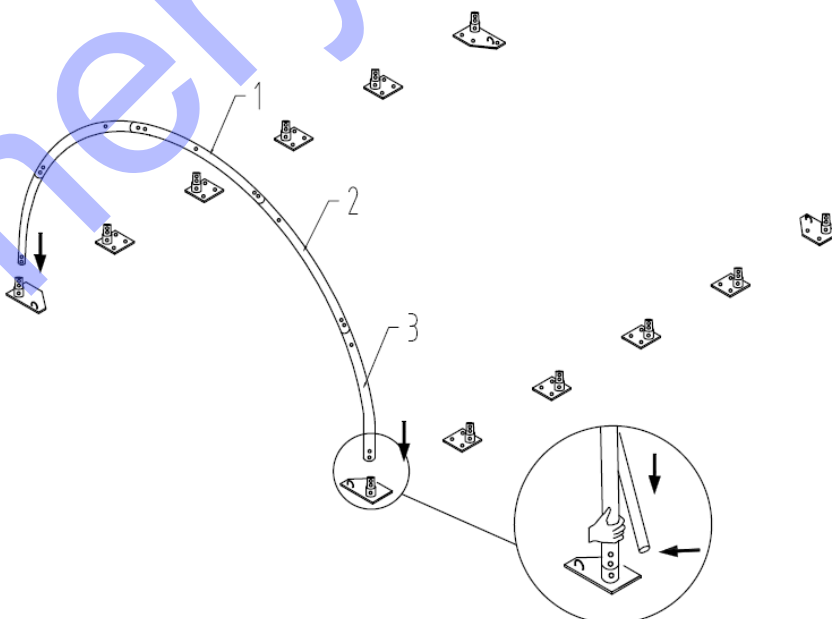


Figure 4

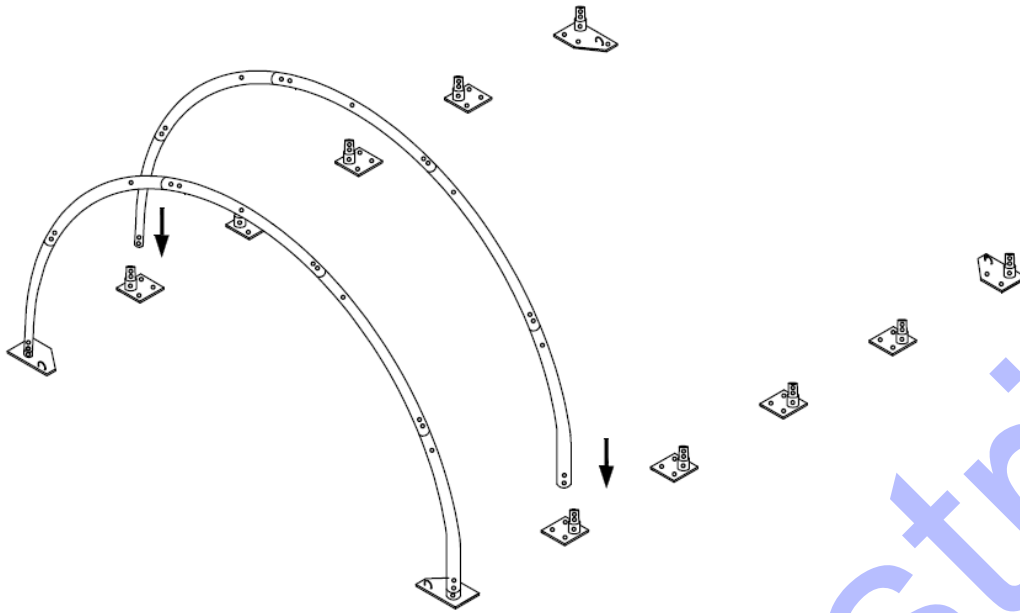


Figure 5

2.As Step 2 shown ,lift an assembled arch onto one base plate and force the other end of the arch onto the opposite base plate.

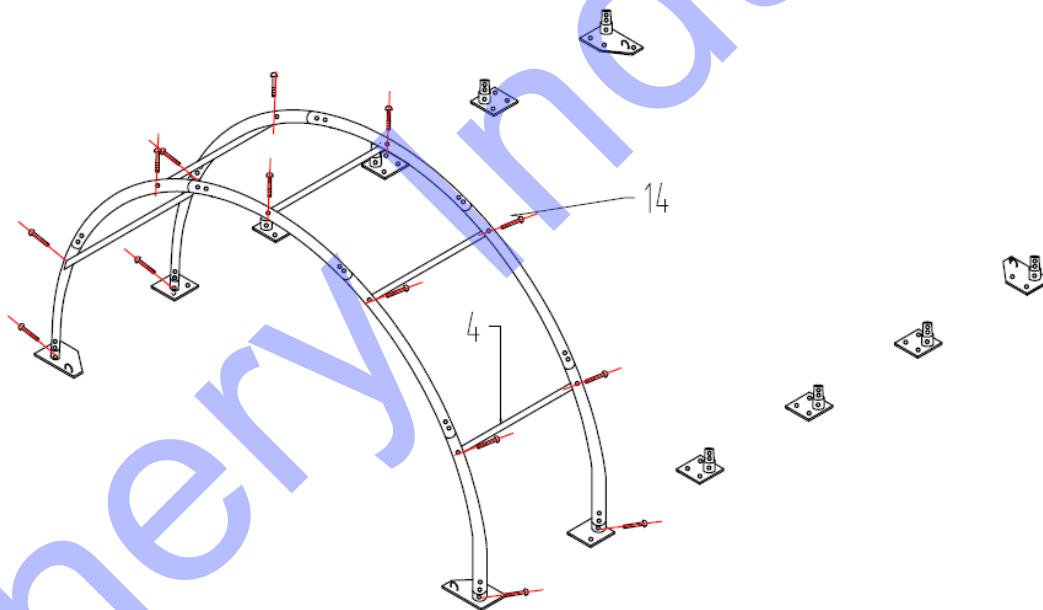


Figure 6

3.When finish installing the first two arches into the base plates, use Purlins (No.4) to connect them by Bolt M10x100mm (No.14).Then install the third arch into the third arch into the plate and connect the Purlins. In this turn, fix all other arches and other purlins.Then come to install the front panel and back panel. Find the relative components and assemble them.

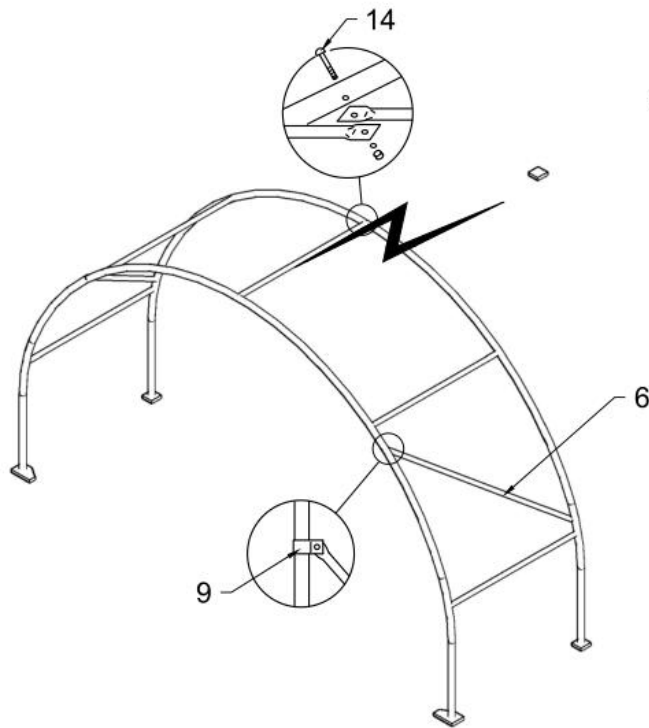


Figure 7

4. Connect the Support Tube (No.6) between the Sidewall tubes and adjust the length.

C-INSTALLING THE FRONT AND BACK COVER

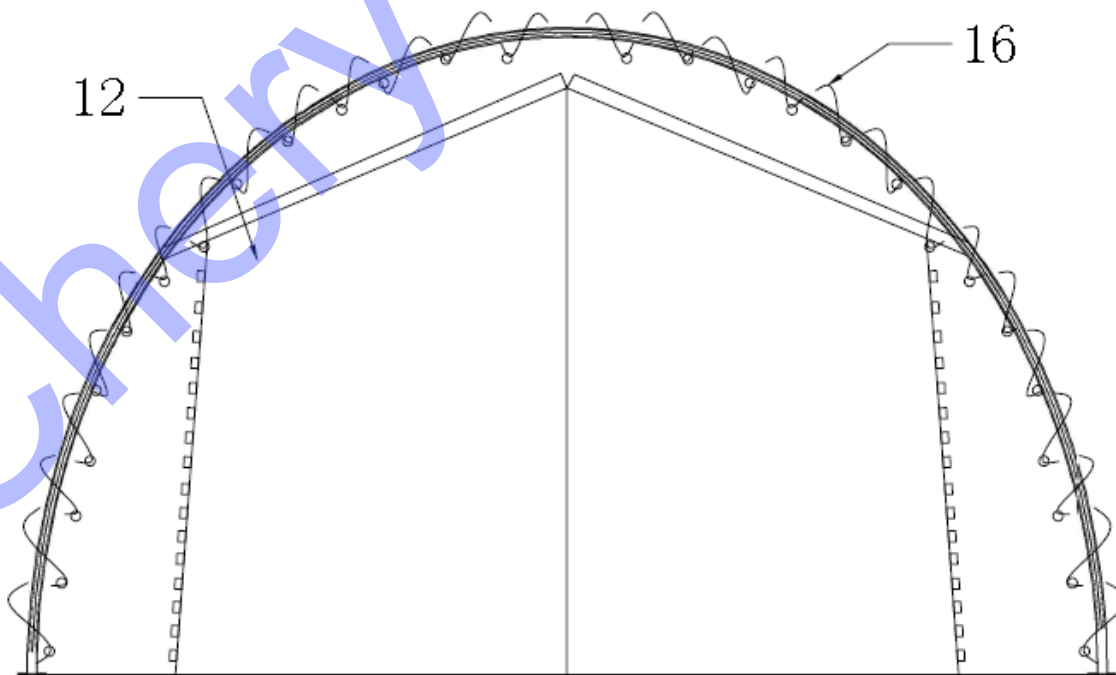


Figure 8

Use the rope (No. 16) to fix the front and rear cover No. 12 to the frame.

D-INSTALLING THE ROOF COVER

NOTE: DO NOT install the cover onto the frame of your building in high wind conditions. A slight breeze is the most advantageous for cover installation. To take advantage of the breeze, pull the cover up over the arches with breeze blowing in the cover like a sail filled with air.

1. Assemble Lower Tension Tube for Roof Cover (No.5) before installing the cover.
2. Roll out the roof cover on a ground sheet. Align the cover evenly to each end of the frame.

Note: Be sure doing not pull over the end of the roof cover.

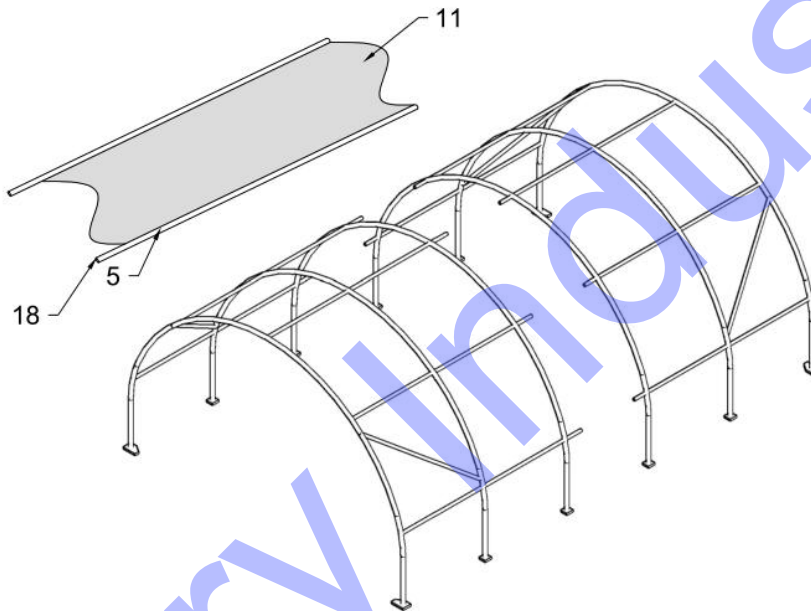


Figure 9

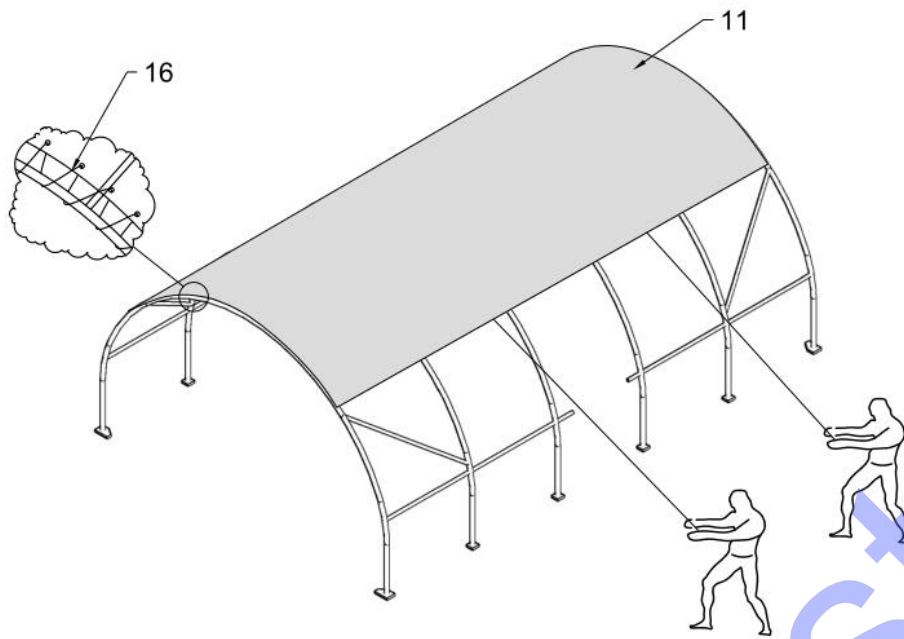


Figure 10

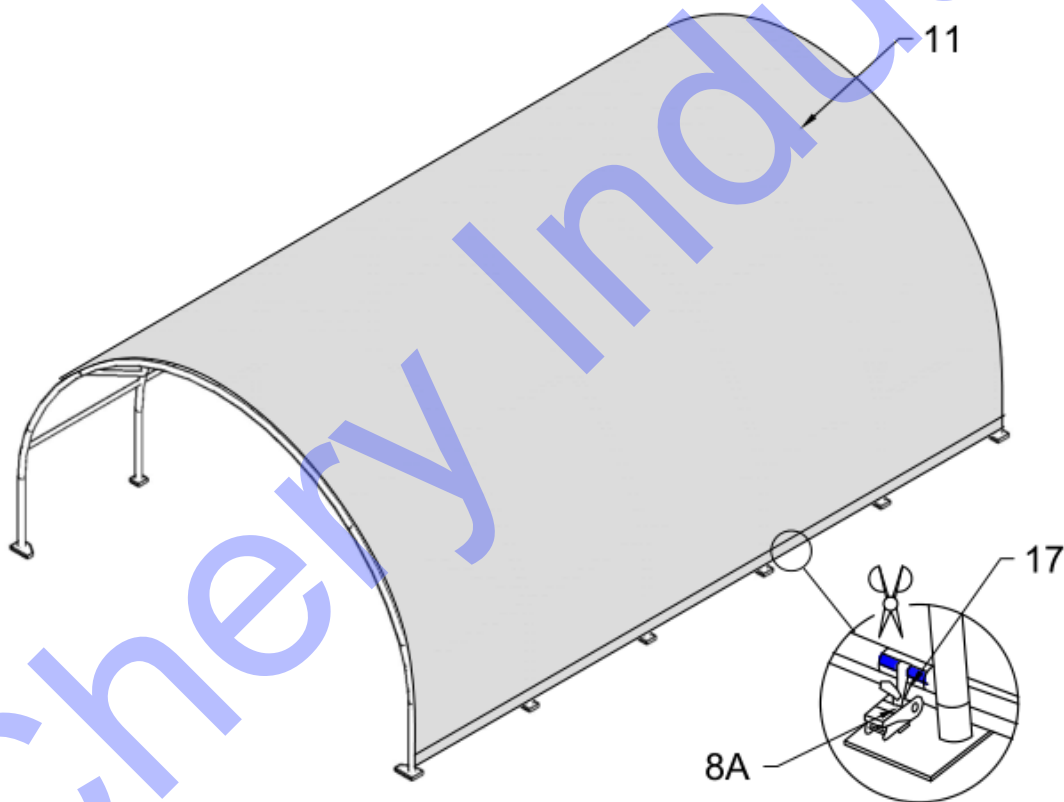


Figure 10

3. Pull the cover over the frame **EVENLY, CAREFULLY AND SLOWLY**. Insert the tension tubes (No.5) into the cover pipe pockets and loosely secure the Nylon Band (No.17) for Ratchet (No.8A). **DO NOT TIGHTEN**. Adjust the cover so that it is square and evenly centered on the frame. Put the lower tension tube inside.

Note: The end flaps must overhang evenly at both ends.

4. With the end flaps flipped back and out of the way, use the supplied Knitting Rope (Part No. 16) to tighten the roof cover to the end arches. The rope should be cut as your requirements when using. The recommended procedure is to use separate pieces of rope and start by first lacing the cover from the bottom edges up to the top center. Secure the ropes at the top center and then apply tension as you lace down both sides. Fasten the rope at the bottom edge. Put the Plastic Plug (No.18) for part No. 5 onto the end of tubes. Drive the Ratchet Tie Down forth and back and then roof cover is tightened.

Tidy the cover, Roof Cover, Back Cover and Front Cover. Fasten the band inside the end of the roof cover, make the cover well fold to the frame and tie the end of the band to the Clips on Base Plates at four corners.

NOW THE INSTALLATION IS FINISHED.

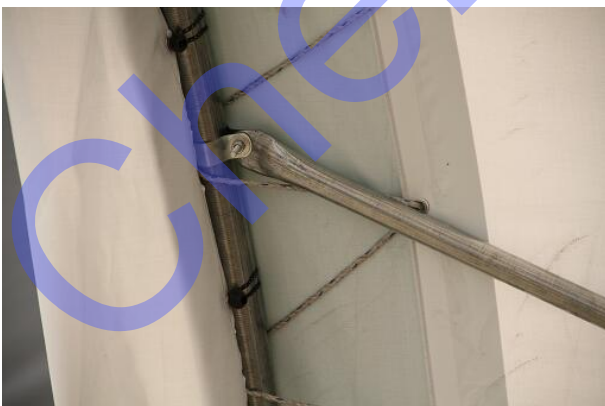
Please check the below installation detailed pictures:



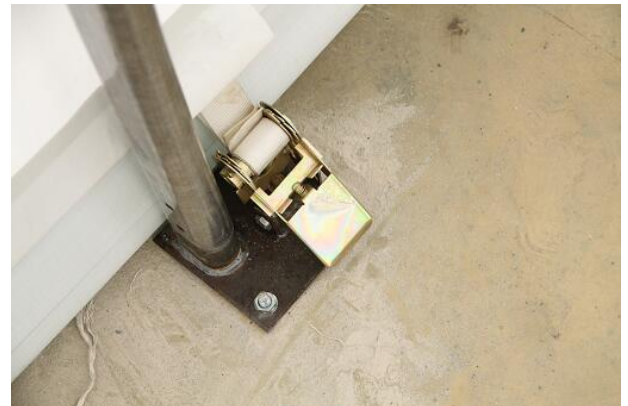
(A)



(B)



(C)



(D)



(E)



(F)

NOTE: DO NOT LEAVE THE ROOF COVER UNATTACHED UNDER ANY CIRCUMSTANCES until the final assembly and tightening has been completed. The process is quite easy. But some tightening adjustments will be necessary to produce a flat, tension ed roof cover. Please adjust the roof cover every month.

Please Note:



Please use the tape wrapped around the gap between the steel skeleton after installing.